

# UH153L

**SHINKO IND. LTD.**  
**HYDROPHORE UNITS**  
 [ PATENT REGISTERED ]

**UH153L** | HYDROPHORE UNITS  
 ( PATENT REGISTERED )

## APPLICATIONS

Hydrophore units for drinking water and fresh water



## GENERAL CHARACTERISTICS FOR A COMBINED-TANK UNIT

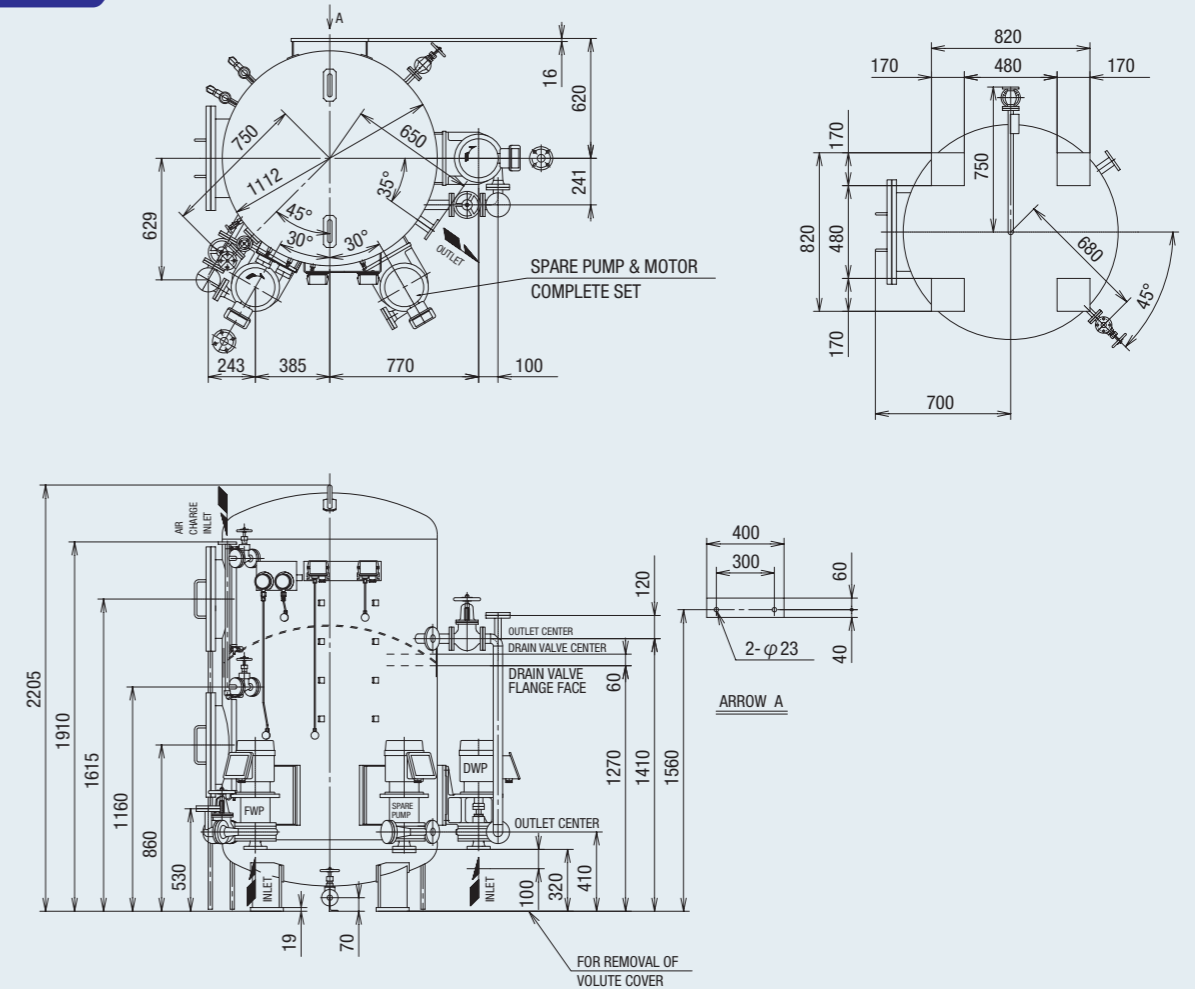
Item	Model	UH 153L	
Kind of liquid		Fresh water	Drinking water
Tank volume	(m <sup>3</sup> )	1.0	0.5
Number of pumps supplied		2	1
Pump type		Vertical single stage centrifugal	
Capacity × head		5~15m <sup>3</sup> /h × 40~60m	
Pump suction bore	(mm)	40	
Tank outlet bore	(mm)	50	
Max.output	(kW)	7.5	
Weight	(kg)	1000	
weight at service condition 0.5MPaG	(kg)	2050	

In order to conserve space in the engine room, this combined hydrophore tank is designed to integrate two tanks into one. The tank is separated horizontally by a dished-end plate. The lower side can hold 1m<sup>3</sup> of fresh water and the upper can hold 0.5m<sup>3</sup> of drinking water.

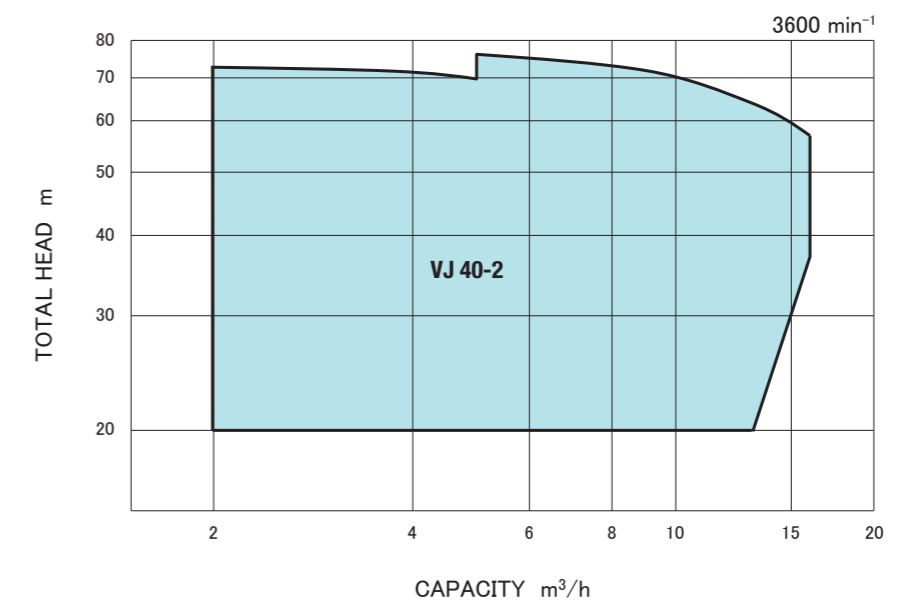
One fresh water pump and one drinking water pump have been simply installed on the combined tank. They are connected with the tank via a screw-down-check valve to supply the water.

Additionally, one spare pump with an electric motor has been installed on the tank simply. If either of the pumps malfunction, they can be replaced with this pump.

UH 153L



## PERFORMANCE CHART



## PAINTING

The inside of the tank is coated with pure epoxy after being thoroughly cleaned with a sandblasting process.